

High Volume Transfer Systems

Featuring the... **BlokPak 3000®**

The **BlokPak 3000®** offers maximum payloads by precompacting waste against a retractable gate forming dense logs of waste and ejecting them into transfer trailers at a rate of up to 90 tons per hour!



Options such as hydraulic trailer connectors, weighing systems and conveyors can be added for additional features & benefits.

When the **RAWHIDE** option is added to the M-1474XW Heavy-duty Transfer Station Compactor, the 48" ram penetration offers clean break-a-ways and up to 1468 cubic yards per hour of throughput capacity.



Marathon Offers Transfer System Comp

BlokPak 3000®



The **BlokPak 3000** is Marathon's largest transfer system compactor. It compacts waste against a vertical gate forming a 10 ft. log in the compaction chamber. Each log is ejected into the transfer trailer. The **BlokPak** continues this process until maximum payload is achieved. When the trailer is full, the **BlokPak** can continue to be fed while changing trailers, saving valuable time.

The **BlokPak** has a compaction chamber that densely compacts the waste before it is ejected into the transfer trailer. This allows much lighter duty, open-top trailers to be used.



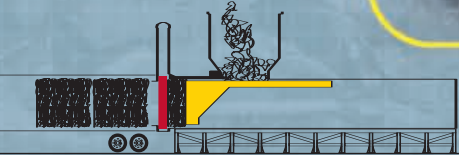
The **BlokPak** forms 10 ft. logs of densely packed waste.



The **BlokPak** has a 5 ft. ram penetration. This ejects the final log into the trailer with very little spillage.



The **BlokPak** control station features the Maestro™ color touch-screen interface which provides programming and diagnostics for the unit.



"We have been able to pack-out a trailer in less than 13 minutes. I've been very pleased with the sales and service support from Marathon."

Jim Fender
Director of Solid Waste Management
City of Salem, VA

Specifications

Structure Size: 53'-6"L x 10'-6"W x 17'-5"H

Charge Box: 100"L x 78"W x 95"H

Compaction Chamber: 107"L x 78"W x 79"H

Ram Cylinder: 10"

Ram Force: 235,600

Ram Pressure: 36 psi

Output Rate: Up to 90 TPH (continuous)

Output Log Size: 78"W x 79"H x Variable

Ram Penetration: 60" into trailer

Max. System Pressure: 3000 psi

Main Cylinder Stroke: 288"

Main Pump Flow: 200 gpm (regen)

Reservoir Capacity: 400 gallons

Oil Cooler: Air to Oil

Main Control Panel: UL Listed, 120 VAC

Main Motor: 100 HP

Main Voltage: 460 VAC, 3-Phase

Controller: Programmable Color Touch-screen

Optional Equipment

Marathon's Transfer System Compactors can be fitted with a variety of options, such as trailer connection systems, to suit your application. The hydraulic scissor extends to connect to the trailer's bumper. The hydraulic grab claws hold the trailer using their side gussets. Marathon also manufactures **EZ-TRAX** Conveyors for an efficient way to feed your transfer system. Load cells can be utilized to keep track of the weight as the compaction trailer is being loaded to maximize payloads.

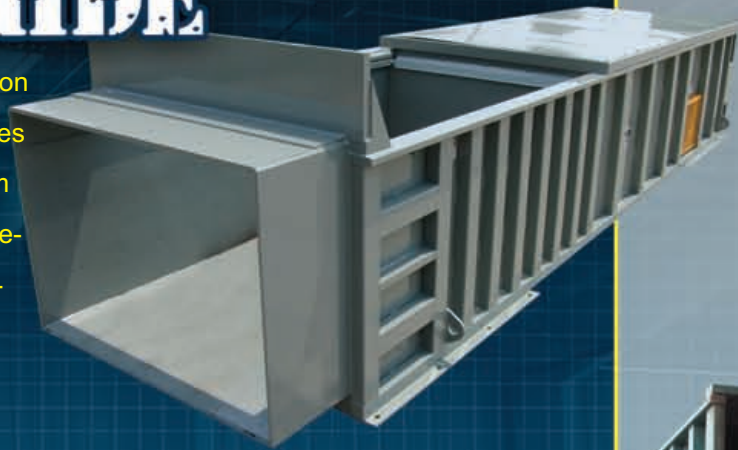
Extending Hydraulic Scissor Connector



Compactors that Process Up to 90 Tons/Hour

RAWHIDE

The RAWHIDE™ is a special option that can be applied to the M-Series 1475 Compactor. It has a 48" ram penetration that is especially beneficial for packing out transfer trailers for a clean break-a-way.



Packer Specifications

Model	Capacity	Overall Dimensions	Clear-top	Weight	Ram Pen.
M-1050XW	10.5 cy.	318"L x 101.5W" x 76"H	123" x 76"	33,000 lbs.	25"
M-1475XW	15 cy.	318"L x 101.5W" x 90"H	123" x 76"	36,000 lbs.	25"
M-1475 RAWHIDE	15 cy.	341.5"L x 101.5W" x 90"H	123" x 76"	37,300 lbs.	48"

M-Series Compactors



Marathon M-Series Compactors are built tough for the high demands of transfer stations or heavy industrial applications. These compactors can be mounted on a stand to compact directly into the transfer trailer. Extended snouts can also be added to aid in clean break-a-ways.



The RAWHIDE features a 48" ram penetration which aids in clean break-a-ways.

Model	Capacity	Overall Dimensions	Clear-top	Weight	Ram Pen.
M-450X	4.5 cy.	202"L x 81.5" x 72.5"H	70" x 56"	16,000 lbs.	18"
M-600XW	6 cy.	202"L x 101.5" x 72.5"H	70" x 76"	20,000 lbs.	18"
M-600X	6 cy.	252"L x 81.5" x 72.5"H	94" x 56"	21,000 lbs.	20"
M-800XW	8 cy.	252"L x 101.5W" x 72.5"H	94" x 76"	24,000 lbs.	20"

See other M-Series specs on the back page.

EZ-TRAX Conveyor System



Hydraulic Grab Claws



Load Cell Weighing System



M-Series Specifications

One PACKER MODULE and one CYLINDER & POWER MODULE complete an Extra Heavy Duty Unit:

Cylinder & Power Module

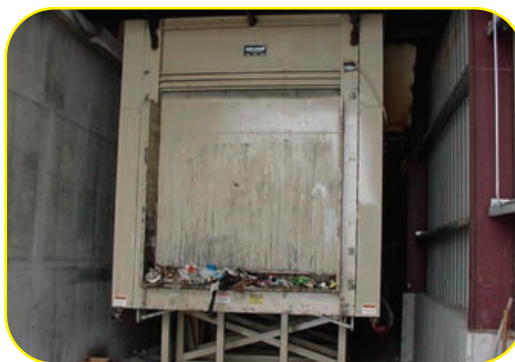
	Capacity: Cy/Hr		Cylinder	HP	GPM	Pump	Cycle Time	Max. Forces	Max. PSI
M-450X & M-600XW	(450X) 223	(600XW) 309	7	20	18	Gear	49 sec.	96,200 lbs.	2500
	(450X) 413	(600XW) 560	7	20	50	Gear	27 sec.	96,200 lbs.	2500
	(450X) 172	(600XW) 236	8	20	18	Gear	64 sec.	125,700 lbs.	2500
	(450X) 294	(600XW) 398	8	20	50	Gear	33 sec.	125,700 lbs.	2500
M-600X & M-800XW	(600X) 236	(800XW) 309	7	20	18	Gear	63 sec.	96,200 lbs.	2500
	(600X) 432	(800XW) 566	7	20	50	Gear	34 sec.	96,200 lbs.	2500
	(600X) 344	(800XW) 450	8	20	50	Gear	43 sec.	125,700 lbs.	2500
	(600X) 521	(800XW) 683	8	30	75	Vane	29 sec.	150,800 lbs.	3000
M-1050XW		508	9	30	75	Vane	51 sec.	159,000 lbs.	2500
		665	9	50	100	Vane	39 sec.	159,000 lbs.	2500
		1234	9	50	125	Vane	21 sec.	190,900 lbs.	3000
M-1475XW		720	9	30	75	Vane	51 sec.	159,000 lbs.	2500
		942	9	50	100	Vane	39 sec.	159,000 lbs.	2500
		1749	9	50	125	Vane	21 sec.	190,900 lbs.	3000

DESCRIPTION: Packer module includes Packer Assembly and Ram Assembly, and Ratchets with Grab Claw. The model number of the Cylinder & Power Module designates the cylinder size (either 7" or 8") and the Horsepower/GPM of the power unit. (Example: 2018G means 20HP/18GPM. The G indicates Gear Pump. A "V" indicates Vane Pump).

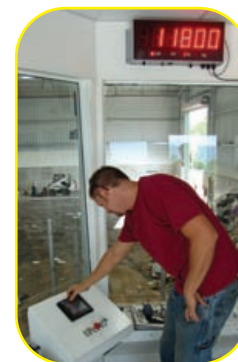
Installations



This transfer station, located in Salem, VA, features 2 BlokPak 3000s for non-stop processing as well as added redundancy. They are fed from a tipping floor.



The BlokPak 3000 fits nicely into existing transfer stations with over-the-top feed systems such as this one located in Black Foot, ID.



The BlokPak control station features a color touch-screen interface. This installation also has an integrated weighing system that displays the accumulating weight on-screen and on overhead monitors while the waste is being processed.



This M-1475XW Transfer Station Compactor is fed via a tipping floor and features the Scissor trailer connection system.



Transfer station compactors can be configured with custom hoppers and feed systems.



See our Transfer System Compactors in action on this DVD.

Authorized Distributor:



MARATHON EQUIPMENT COMPANY

P.O. Box 1798 • Vernon, AL 35592-1798 USA • (205) 695-9105 fax (205) 695-7250 **1-800-633-8974**

130 Hwy. 339 • Yerington, NV 89447 USA • (775) 463-4030 fax (775) 463-4531 **1-800-624-5724**

1102 Industrial Park Rd. • Clearfield, PA 16830 USA • (814) 765-0200 fax (814) 765-2072 **1-800-922-7062**

Pictures in this literature are illustrative only. Specifications are subject to change without notice in order to accommodate improvements to the equipment. Certified in compliance with ANSI Regulation Z245.2, all OSHA standards, and certified under WASTEC's Stationary Compactor Certification Program. Products must be used with safe practice and in accordance with said regulations and standards.

